

Anti-CDC37 Antibody
Rabbit polyclonal antibody to CDC37
Catalog # AP59807**Specification**

Anti-CDC37 Antibody - Product Information

Application	WB, IP, IF/IC, IHC
Primary Accession	Q16543
Other Accession	Q61081
Reactivity	Human, Mouse, Rat, Monkey
Host	Rabbit
Clonality	Polyclonal
Calculated MW	44468

Anti-CDC37 Antibody - Additional Information**Gene ID** 11140**Other Names**

CDC37A; Hsp90 co-chaperone Cdc37; Hsp90 chaperone protein kinase-targeting subunit; p50Cdc37

Target/Specificity

Recognizes endogenous levels of CDC37 protein.

Dilution

WB~~WB (1/500 - 1/1000), IH (1/100 - 1/200), IF/IC (1/100 - 1/500), IP (1/10 - 1/100)

IP~~N/A

IF/IC~~N/A

IHC~~1:100~500

Format

Liquid in 0.42% Potassium phosphate, 0.87% Sodium chloride, pH 7.3, 30% glycerol, and 0.09% (W/V) sodium azide.

Storage

Store at -20 °C. Stable for 12 months from date of receipt

Anti-CDC37 Antibody - Protein Information**Name** CDC37**Synonyms** CDC37A**Function**

Co-chaperone that binds to numerous kinases and promotes their interaction with the Hsp90 complex, resulting in stabilization and promotion of their activity (PubMed:8666233). Inhibits

HSP90AA1 ATPase activity (PubMed:23569206).

Cellular Location

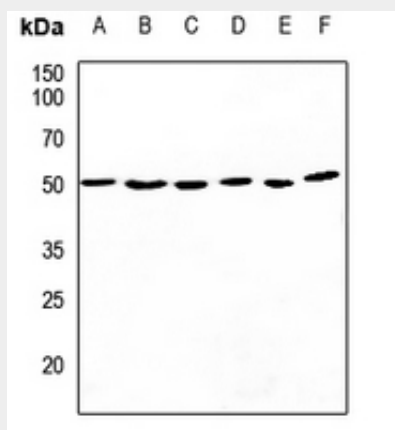
Cytoplasm.

Anti-CDC37 Antibody - Protocols

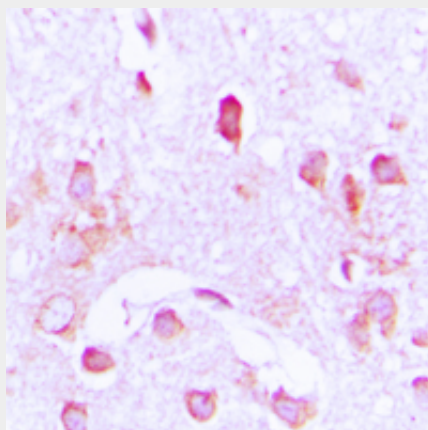
Provided below are standard protocols that you may find useful for product applications.

- [Western Blot](#)
- [Blocking Peptides](#)
- [Dot Blot](#)
- [Immunohistochemistry](#)
- [Immunofluorescence](#)
- [Immunoprecipitation](#)
- [Flow Cytometry](#)
- [Cell Culture](#)

Anti-CDC37 Antibody - Images

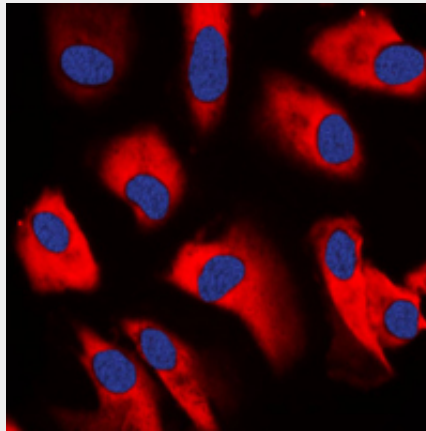


Western blot analysis of CDC37 expression in HEK293T (A), Hela (B), H446 (C), H1688 (D), mouse lung (E), rat lung (F) whole cell lysates.



Immunohistochemical analysis of CDC37 staining in human brain formalin fixed paraffin embedded tissue section. The section was pre-treated using heat mediated antigen retrieval with

sodium citrate buffer (pH 6.0). The section was then incubated with the antibody at room temperature and detected using an HRP conjugated compact polymer system. DAB was used as the chromogen. The section was then counterstained with haematoxylin and mounted with DPX.



Immunofluorescent analysis of CDC37 staining in K562 cells. Formalin-fixed cells were permeabilized with 0.1% Triton X-100 in TBS for 5-10 minutes and blocked with 3% BSA-PBS for 30 minutes at room temperature. Cells were probed with the primary antibody in 3% BSA-PBS and incubated overnight at 4 °C in a humidified chamber. Cells were washed with PBST and incubated with a DyLight 594-conjugated secondary antibody (red) in PBS at room temperature in the dark. DAPI was used to stain the cell nuclei (blue).

Anti-CDC37 Antibody - Background

KLH-conjugated synthetic peptide encompassing a sequence within the center region of human CDC37. The exact sequence is proprietary.